

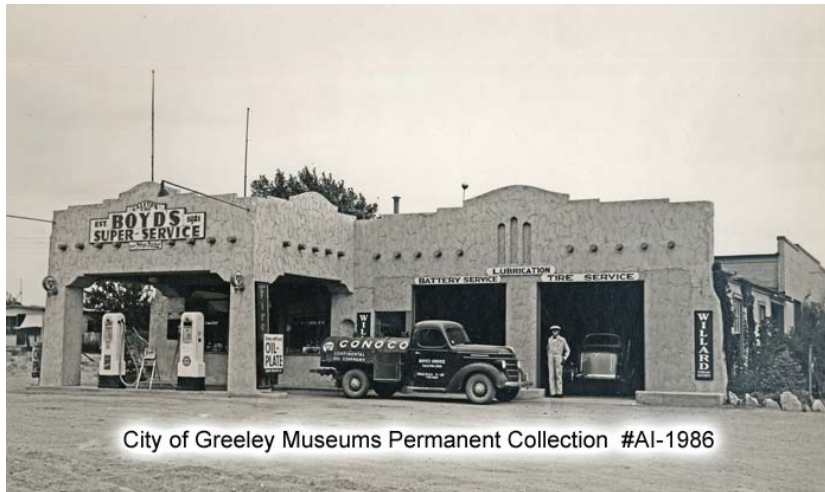


HISTORY OF WELD COUNTY TOWNS

GALETON – 1910

Unincorporated Communities and Populated Place in Current Weld County

When this town site was laid out in 1909 the original name was Zita, after a local rancher's daughter. Then in 1910 the community relocated west of the original site and their new name was to be Gale, honoring Jesse S. Gale (1845-1927) a pioneer cattle



City of Greeley Museums Permanent Collection #AI-1986

August 1939 – Boyd's Service Station; Established in 1921 in Galeton, Colorado; City of Greeley Museums Permanent Collection #AI-1986

Store, Colorado's last general store post office. Galeton Coal Mine was located just east of Galeton, 1935 to 1940. It was a wagon mine, meaning a mine that supplied only to local markets.

rancher and Greeley banker. But that name was thought to sound too much like Gill, a neighboring community's name, so Galeton was chosen instead.

The Galeton Post Office was established in 1910 and for over 50 years was located in Dillard's Grocery

The above information is gleaned from the upcoming book, Weld County Towns: The First 150 Years, researched by the City of Greeley Museums staff, Nancy Lourine Lynch head writer.