



HISTORY OF WELD COUNTY TOWNS

HUDSON

1887 Town Plat and Incorporated Weld County Town - 1914

In 1883 the Hudson Post Office was established along with a railroad water and supply stop with a section house for the Union Pacific along their new Colorado



City of Greeley Museums Hazel E. Johnson Collection #1991.42.0574E

c1915 – Hudson Baseball Team: Some names of gentlemen on the team: Grover Kearns, John Kearns, Merl Fish, Billy Young, and Dick Culverwell; City of Greeley Museums Hazel E. Johnson Collection #1991.42.0574E

line between Denver and Eckley. John M. Lapp filed a plat in 1887 for the Hudson City Land and Improvement Company (the town's namesake). Land speculation was booming and a second plat was filed for an additional 3,000 lots in 1889.

The creation of the Henrylyn Municipal Irrigation District in 1907 brought more land speculators,

permanent residents and a newspaper.

Approximately 75 farmers from Kansas and Oklahoma moved to Hudson between 1910 and 1913 and

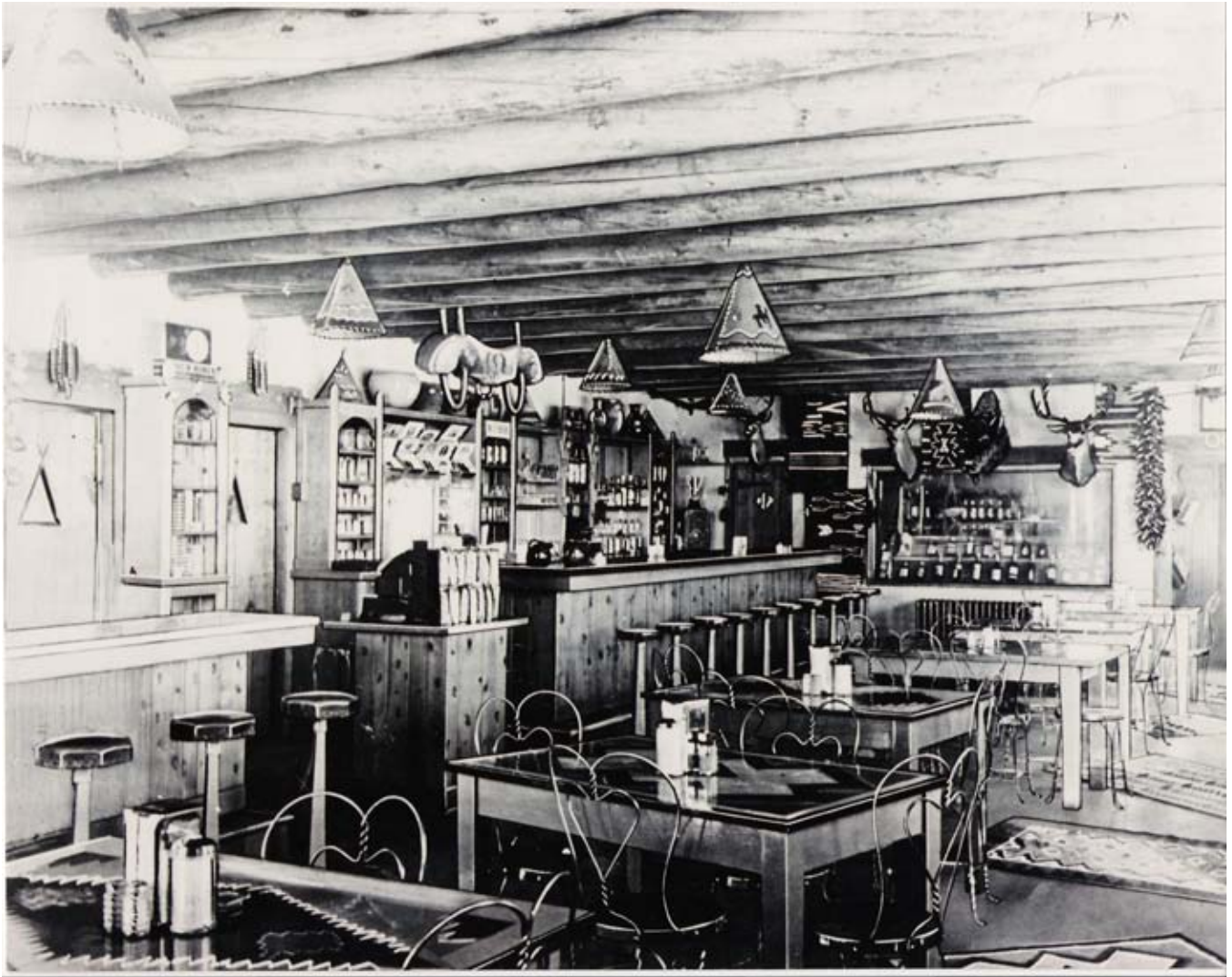
the town incorporated in Weld County in 1914.

By 1930 the Henrylyn Municipal Irrigation District was irrigating 34,617 acres of southeast Weld County with water from the South Platte River. This helped to transform Hudson into a successful farming and agricultural community.



Pepper Pod Restaurant Aerial Image c 1948

The Pepper Pod Restaurant began serving buffalo (bison) meat during WWII due to a shortage of beef. This led them to keep their own herd in pens behind the restaurant as can be seen in this aerial view. Tourists and local children would peek at the herd through the fence, adding to their appeal as an attraction in Hudson along the highway. Image on loan courtesy of the Martin-Regalado Family.



Pepper Pod Restaurant Interior Image c 1948

The Pepper Pod, built in 1913 by the Peppers family, began as a small cafe on Old Main Street in Hudson. Business soon required that they build a larger restaurant on Highway 6. Then in 1956, the present Pepper Pod was constructed near Interstate 80 (now I-76). Image on loan courtesy of the Martin-Regalado Family.

*The above information is gleaned from the upcoming book, **Weld County Towns: The First 150 Years**, researched by the City of Greeley Museums staff, Nancy Lourine Lynch head writer.*