

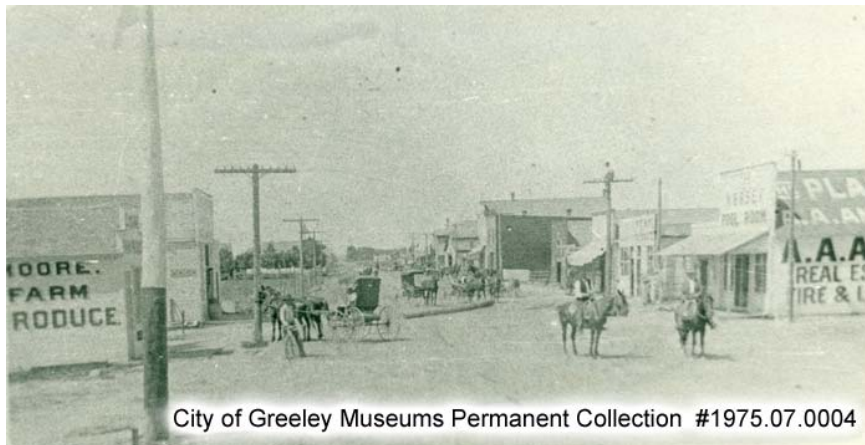


## HISTORY OF WELD COUNTY TOWNS

### **KERSEY**

*Incorporated Weld County Town - 1908*

The Union Pacific Railroad line allowed a shipping depot to be built in 1884 at Orr, provided they change the name. Orr was too similar to other station names on that line.



City of Greeley Museums Permanent Collection #1975.07.0004

*1914 – Downtown Kersey looking North; Look on top of left-center phone pole and see a man installing the first lines in Kersey for Mountain States Telephone; City of Greeley Museums Permanent Collection #1975.07.0004*

The local rail road master, James Kersey Painter, changed it to that of his mother's maiden name, Kersey.

On November 10, 1908, the Kersey citizens voted to incorporate, creating an officially recognized town. Most

of Kersey's settlement

was in surrounding farms and ranches, producing everything from sugar beets and potatoes to steers and sheep.

In 1920 Kersey had grown to include a newspaper, butcher shop, bakery, drug store, bank, ice factory, hay mill, livery barn, harness and shoe shop, and a baseball park, two pool halls (one maintained a cigar factory in back), grain elevators, barbershops, lumber yards, dance halls, doctors, hotels, cafes, three grocery stores plus a brick two-story high school. Kersey churches served Methodists, Baptists and Evangelists. There were two movies shown every week in Woodman's Hall, though there were fewer than one thousand Kersey area residents.

*The above information is gleaned from the upcoming book, **Weld County Towns: The First 150 Years**, researched by the City of Greeley Museums staff, Nancy Lourine Lynch head writer.*