



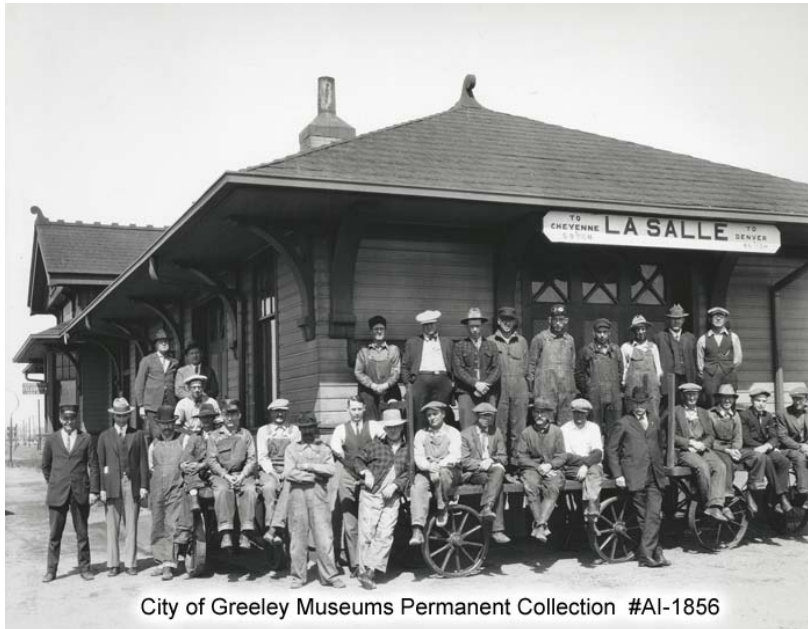
HISTORY OF WELD COUNTY TOWNS

LASALLE

Incorporated Weld County Town - 1881

The Denver Pacific Railroad (DPRR) from Cheyenne reached the present La Salle town site May 11, 1870. By 1875 La Salle had a depot, section house, and coal chutes but it wasn't until 1881 that a town began to develop as the Union Pacific bought out the DPRR and extended a line 151 miles southwestward from Julesburg, meeting the

Cheyenne to Denver line at La Salle.



City of Greeley Museums Permanent Collection #AI-1856

c1937 – LaSalle Depot; City of Greeley Museums Permanent Collection #AI-1856

The most likely theory about the naming of La Salle is that it was named after the La Salle railroad station in Chicago, named for the French explorer, Robert Cavalier Sieur de la Salle (1643-1687).

In 1886 the La Salle Post Office was established and the town was platted in 1891.

In 1909 the railroad built a four-stall roundhouse to turn train engines, a rail car repair shop and a 60,000 gallon water tank and the town grew to provide major passenger and freight service. LaSalle was incorporated in 1910.

LaSalle's bridge over the South Platte River was built in 1936. The final portion of the first concrete highway in Colorado was opened between Greeley and LaSalle in September 1954. UPRR received a protest in 1955 from the coalition of Greeley, Eaton

and LaSalle about a plan to discontinue local train passenger services between Cheyenne and Denver, but eventually the service was closed.

The above information is gleaned from the upcoming book, Weld County Towns: The First 150 Years, researched by the City of Greeley Museums staff, Nancy Lourine Lynch head writer.